

INTERIM DREDGE DISPOSAL TASK FORCE

Date: November 3, 2010

ISSUE DATE: November 16, 2010

NAME	ORGANIZATION	EMAIL
Will Friedman	Port Authority	William.friedman@portofcleveland.com
John Watkins	ODNR	John.watkins@dnr.state.oh.us
Valarie J. McCall**	City of Cleveland	vmccall@city.cleveland.oh.us
Rich Zavoda	ArcelorMittal	richzavoda@arcelormittal.com
L. Skip Brown+	Cong. Marcia Fudge	Lloyd.brown@mail.house.gov
John Patterson**	Sen. Brown	John_patterson@brown.senate.gov
LTC Stephen Bales+	USACE	Stephen.H.Bales@usace.army.mil
Bill Skowronski	Ohio EPA	bill.skowronski@epa.state.oh.us
James White	Cuyahoga River RAP	whitej@cuyahogariverrap.org
Mark Locker+	ODOT	mark.locker@dot.state.oh.us
Diane Downing+	Sen. Voinovich	Diane_downing@voinovich.senate.gov
Ronald Kozlowski	USACE	ronald.j.kozlewski@usace.army.mil
Joe Kreitinger	USACE-ERDC	joseph.p.kreitinger@usace.army.mil
Frank O'Connor	USACE-LRB	frank.a.o'connor@usace.army.mil
Monica Drake	ODOT	monica.drake@dot.state.oh.us
Skip Jacobsen	Port Authority	skip.jacobsen@portofcleveland.com
Karen Keil+	USACE-Buffalo	karen.g.keil@usace.army.mil
Edith Chase+		None listed.
Richard Price+	USACE-ERDC	richard.a.price@erdc.usace.army.com
Barbara A. Martin	Dike 14 Committee	Barbaramartin2001@juno.com
Elva Edger	League of Woman Voters	None listed.
Dave Baker+	LaFarge	Dave.baker@lafarge-na.com
Victoria Peterlin	Dike 14	
Tom Switala+	USACE	Thomas.c.switala@usace.army.mil
Dan Lorenz+	Joe Dirt	Dan.lorenz@thenp.biz
Kurt Princic+	OEPA	kurt.princic@epa.state.oh.us
Brooke Furio	EPA	Furio.Brooke@epamail.epa.gov
Brent Leslie+	Port Authority	brent.leslie@portofcleveland.com
Vanessa Steigerwald-Dick+	Ohio EPA	vanessa.steigerwald@epa.state.oh.us
Marty Gelfand	Cong. Dennis Kucinich	marty.gelfand@mail.house.gov
Brenda Culler+	ODNR Coastal	brenda.culler@dnr.state.oh.us
Ken Hadden	HGC Inc.	kenhadden@sbcglobal.net
Jerry Ptak+	USACE	jerry.m.ptak@usace.army.mil
Mike LaWell	ArcelorMittal	mwlawell@aol.com
Kellie Rotunno+	NEORS	rotunnok@neorsd.org
Lynn Greer+	USACE	Lynn.m.greer@usace.army.mil
Greg Marshall+	Premium Env,	gregm@premiumdrivers.com

Task Force Meeting Minutes

November 3, 2010

Page 2

Jan Rybka	Cuy Soil & Water Conservation District	jrybka@cuyahogawcd.org
John Hull	Hull & Associates	Jhull@hullinc.com
Sandra Ambris	City of Cleveland	sambris@clevelandairport.com
Rich Worthington+	Steinberg & Associates	Rtworth45@verizon.net
Doug Prodoehl	Joe Dirt	doug@joeknowsdirty.com
David Jones	LaFarge	David.jones@lafarge-na.com
Jacqueline Bird	WorleyParsons Group	Jacqueline.bird@worleyparsons.com
John Pauling	WorleyParsons Group	John.pauling@woleyparsons.com
David Detwiler	EAE Logistics	ddetwiler@sbcglobal.net
Stephen Coleman	North Star Contracting	Stephen@ohionorthstar.com
Tim Knaus	Mintek Resources	tim@mintekresources.com
Ray Wiecek	Independence Ex.	Rwiecek@index.com
Phil Berkeley	USACE	Philip.e.berkeley@usace.army.mil
Dave Guthier	Port Authority	Dave.gutheil@portofcleveland.com
Alison Ball	Cuy. Cty Planning Commission	aball@cuyahogacounty.us
Mike Skerritt	Frelco Technology	None listed.
Glen Dieterle	URS	Glen_dieterle@urscorp.com

+ Not present **Attended by phone

ACTION BY	ITEM	DESCRIPTION
INFO	1.	No comments on the October 6 meeting minutes.
INFO	2a.	Bill Skowronski talked about siting criteria for dredged material and stated there isn't any, being that its use is relatively new; previously dredged material has always gone to a CDF.
INFO	b.	The OEPA's mission is to protect human health and the environment. Further, OEPA's involvement is covered by surface water law, 6111. The issue with disposal in a quarry exists because the material has some contamination and, therefore, there is concern over its final disposition. The most important consideration when siting a landfill is groundwater because if a problem is created with groundwater, it's one of the toughest to fix.
INFO	c.	Siting consideration begins with a hydrologic investigation to ascertain the groundwater level. There must be 15' isolation layer between the liner at the bottom of the proposed waste to the upper most aquifer. Over the years OEPA found that certain kinds of settings are not suitable for disposal of contaminated soil; these

<p>INFO</p> <p>INFO</p> <p>INFO</p> <p>INFO</p> <p>OEPA</p>	<p>d.</p> <p>e.</p> <p>f.</p> <p>g.</p> <p>h.</p>	<p>include sand and gravel pits, and limestone and quartz quarries. Because dredged material siting criteria don't exist, criteria are borrowed from other programs.</p> <p>In the case of quarries filled with water, material in essence would be placed directly in the groundwater, which is the problem. For this reason, quarries have been ruled out as an option for disposal. Even in the case of a dry quarry, the limestone or sandstone rock is typically fractured where water exposed to the contamination could eventually leach out into the groundwater when it rains.</p> <p>Procedurally, District offices do the study to evaluate a disposal request, issue a report, and a recommendation. That goes to Columbus. From there, the Director makes the final decision. These decisions can always be appealed.</p> <p>The potential to fill a quarry with dredged material that isn't contaminated and suitable for open lake dumping would not be considered as "other waste" under 1611. However, this would be evaluated to make sure some other rule isn't being violated.</p> <p>If sediment is determined to be equivalent (contamination level) to surface soils in the Cleveland Metropolitan area, would the sediment still be considered as other waste? Bill believes it would, but these issues are being discussed and may be subject to change.</p> <p>Jim White asked why disposal of contaminated soil in a quarry is different from a CDF in which contaminants can permeate the stone berm into adjacent waters? OEPA has not weighed in on this issue.</p>
<p>City of Cleveland</p>	<p>3.</p>	<p>John Hull reported that capacity of the CVIC could be increased by modifying the design of the site, but that would require an extension to the JRS Grant. There are several hundred thousand yards of airspace available that weren't figured in the original capacity. They've also looked at the potential of a long term processing facility for new dredged material. And finally, consideration has been given to selling material received from 10B to be used elsewhere. Also, they've looked at filling basements of demolished houses; this would entail a rigorous sampling program.</p>
<p>City of Cleveland</p>	<p>4a.</p>	<p>Jan Rybka reported on availability to use dredged material to fill basements of vacant properties. The average house needs 185 yd³ to fill the basement. Currently dredged material is not suitable for residential use, but could it be? Over 1,000 houses are being demolished each year. Another issue is the large volume of runoff into storm sewers due to clay surface prevalent on these properties. If basements could be filled with suitable dredged material, sites could be regraded at the same time to minimize runoff. Currently the City has no budget for moving and placing materials when the basements are cleared.</p>

Task Force Meeting Minutes

November 3, 2010

Page 4

INFO	b.	Even though the dredged material may be less contaminated than existing soils, OEPA won't allow disposal of a lesser contaminated material that doesn't meet the strict residential standards.
INFO	5a.	Brooke Furio stated that there are programs and funding within USEPA that could be applied to help get these projects off the ground. However, the only way to bring assistance from the Feds is that a couple of the concepts are going to have to be written up in a business plan format; that's what moved the original Pershing Avenue project. The City of Cleveland put money into a contract and had the assigned contractor (Value Recovery Group and subs) take an idea and build a short proposal. It took some time and the original proposal differs from what is going on today. However, many of the core elements remain and that original proposal is what led to the grant from ODOD and the Stimulus funding from the Feds. The bottom line is for OEPA, USEPA, ODOT, or anyone else to respond to a concept, they will need something to respond to. OEPA could not respond to the regulatory concerns of Pershing Avenue until the City had a proposal that they could review and react to.
TASK FORE	b.	Currently USEPA is looking at Toledo, Saginaw, Cleveland, and Detroit. The first city to submit an acceptable proposal will likely be funded.
ERDC	6.	Joe Kreitinger reported on the beneficial use assessment report. The focus over the last month has been identifying additional sampling for the upper mile of the river. The goal is to collect data for acceptability for upland placement, landfill cover, potential for wetland placement, and urban revitalization projects. In addition, Joe has been focusing on the sites with the highest potential for beneficial reuse in the short run. Data will be collected and analyzed next month. The USACE identified funding in house. The draft report for internal review is mid-January and final in February. There are engineering solutions that could potentially allow the quarries to work, but this is definitely an uphill battle.
INFO	7.	Frank O'Connor discussed the draft schedule for the interim and long term dredge disposal solutions; green is the ERDC evaluation, blue covers the interim site improvements, brown is the revised DMMP, and gray is the new CDF. Interim solution improvements are scheduled to be in place by September 2012. Plans and specs for the long term solution are expected to be advertised in March 2013. Schedule updates are planned for every two months. The draft schedule (dated September 13, 2010) is posted on the Port's website. MRF=memorandum for record. IPR=independent peer review.
INFO	8.	The Port is also looking into long term solutions independently by

Task Force Meeting Minutes

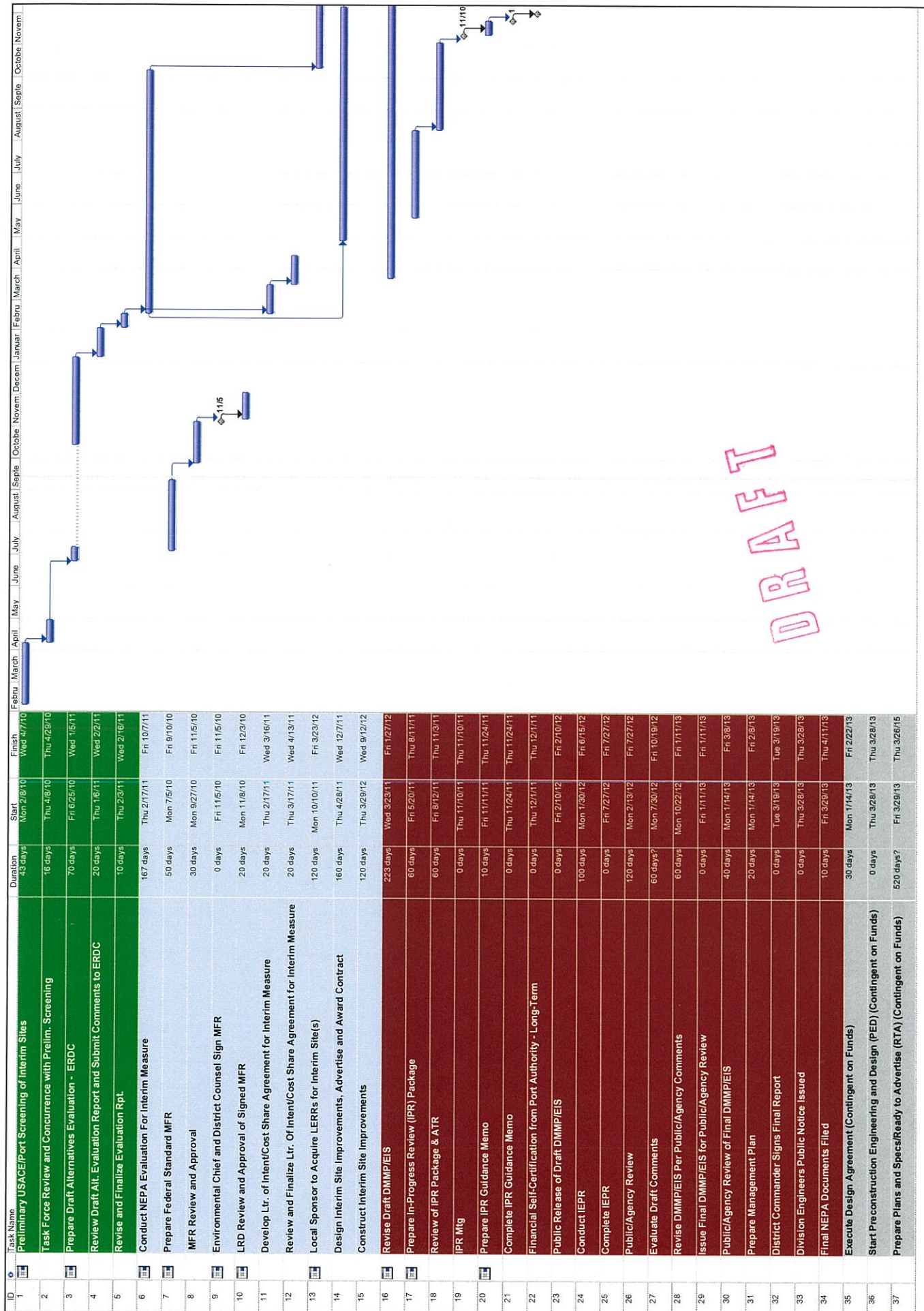
November 3, 2010

Page 5

		evaluating sites previously identified for future CDF's. Once output is available, information will be shared with the Task Force.
INFO	9.	Subjects for next month include results from the modeling effort of the bed load transport, business plan work assignments for USEPA funding, and review of the top five alternatives for interim disposal. Please forward additional topics to the writer.
INFO	10.	The next meeting for the Task Force will be at 1:30PM on December 8, 2010.

Distribution: Task Force, Attendees

The above covers items discussed in the last Task Force meeting. Any additions or corrections should be forwarded to Skip Jacobsen (skip.jacobsen@portofcleveland.com).



DRAFT

ID	Task Name	Duration	Start	Finish
1	Preliminary USACE/Port Screening of Interim Sites	43 days	Mon 2/8/10	Wed 4/7/10
2	Task Force Review and Concurrence with Prelim. Screening	16 days	Thu 4/8/10	Thu 4/29/10
3	Prepare Draft Alternatives Evaluation - ERDC	70 days	Fri 6/25/10	Wed 1/5/11
4	Review Draft AIL: Evaluation Report and Submit Comments to ERDC	20 days	Thu 1/6/11	Wed 2/2/11
5	Revise and Finalize Evaluation Rpt.	10 days	Thu 2/3/11	Wed 2/16/11
6	Conduct NEPA Evaluation For Interim Measure	167 days	Thu 2/17/11	Fri 10/7/11
7	Prepare Federal Standard MFR	50 days	Mon 7/5/10	Fri 9/10/10
8	MFR Review and Approval	30 days	Mon 9/27/10	Fri 11/5/10
9	Environmental Chief and District Counsel Sign MFR	0 days	Fri 11/5/10	Fri 11/5/10
10	LRD Review and Approval of Signed MFR	20 days	Mon 11/8/10	Fri 12/3/10
11	Develop Ltr. of Intent/Cost Share Agreement for Interim Measure	20 days	Thu 2/17/11	Wed 3/16/11
12	Review and Finalize Ltr. Of Intent/Cost Share Agreement for Interim Measure	20 days	Thu 3/17/11	Wed 4/13/11
13	Local Sponsor to Acquire LERs for Interim Site(s)	120 days	Mon 10/10/11	Fri 3/23/12
14	Design Interim Site Improvements, Advertise and Award Contract	160 days	Thu 4/28/11	Wed 12/7/11
15	Construct Interim Site Improvements	120 days	Thu 3/29/12	Wed 9/12/12
16	Revise Draft DMMP/EIS	223 days	Wed 3/23/11	Fri 11/27/12
17	Prepare In-Progress Review (IPR) Package	60 days	Fri 5/20/11	Thu 8/4/11
18	Review of IPR Package & ATR	60 days	Fri 8/12/11	Thu 11/3/11
19	IPR Mtg	0 days	Thu 11/10/11	Thu 11/10/11
20	Prepare IPR Guidance Memo	10 days	Fri 11/11/11	Thu 11/24/11
21	Complete IPR Guidance Memo	0 days	Thu 11/24/11	Thu 11/24/11
22	Financial Self-Certification from Port Authority - Long-Term	0 days	Thu 12/1/11	Thu 12/1/11
23	Public Release of Draft DMMP/EIS	0 days	Fri 2/10/12	Fri 2/10/12
24	Conduct IEPR	100 days	Mon 1/30/12	Fri 6/15/12
25	Complete IEPR	0 days	Fri 7/27/12	Fri 7/27/12
26	Public/Agency Review	120 days	Mon 2/13/12	Fri 7/27/12
27	Evaluate Draft Comments	60 days?	Mon 7/30/12	Fri 10/19/12
28	Revise DMMP/EIS Per Public/Agency Comments	60 days	Mon 10/22/12	Fri 11/1/13
29	Issue Final DMMP/EIS for Public/Agency Review	0 days	Fri 11/1/13	Fri 11/1/13
30	Public/Agency Review of Final DMMP/EIS	40 days	Mon 7/14/13	Fri 3/8/13
31	Prepare Management Plan	20 days	Mon 7/14/13	Fri 2/8/13
32	District Commander Signs Final Report	0 days	Tue 3/19/13	Tue 3/19/13
33	Division Engineers Public Notice Issued	0 days	Thu 3/28/13	Thu 3/28/13
34	Final NEPA Documents Filed	10 days	Fri 3/29/13	Thu 4/11/13
35	Execute Design Agreement (Contingent on Funds)	30 days	Mon 1/14/13	Fri 2/22/13
36	Start Preconstruction Engineering and Design (PED) (Contingent on Funds)	0 days	Thu 3/28/13	Thu 3/28/13
37	Prepare Plans and Specs/Ready to Advertise (RTA) (Contingent on Funds)	520 days?	Fri 3/29/13	Thu 3/26/15

